



# MONTHLY MEMBERSHIP PROGRESS REPORT

District 201N1

Results as of: 04/30/2019

GMT: ANN ELDRIDGE

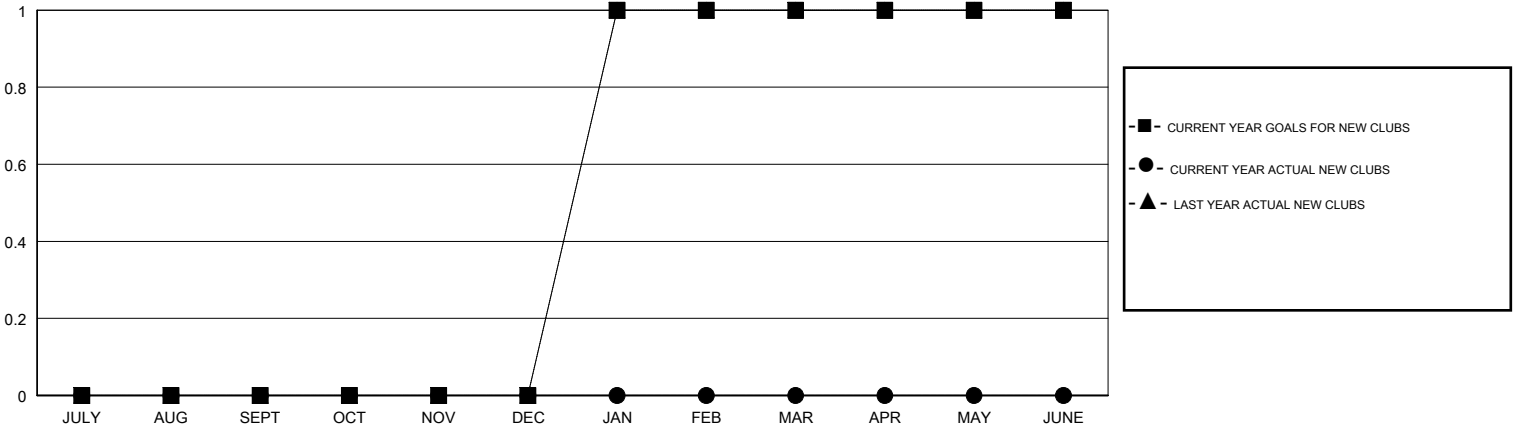
LOCATION AUSTRALIA

GMT CA

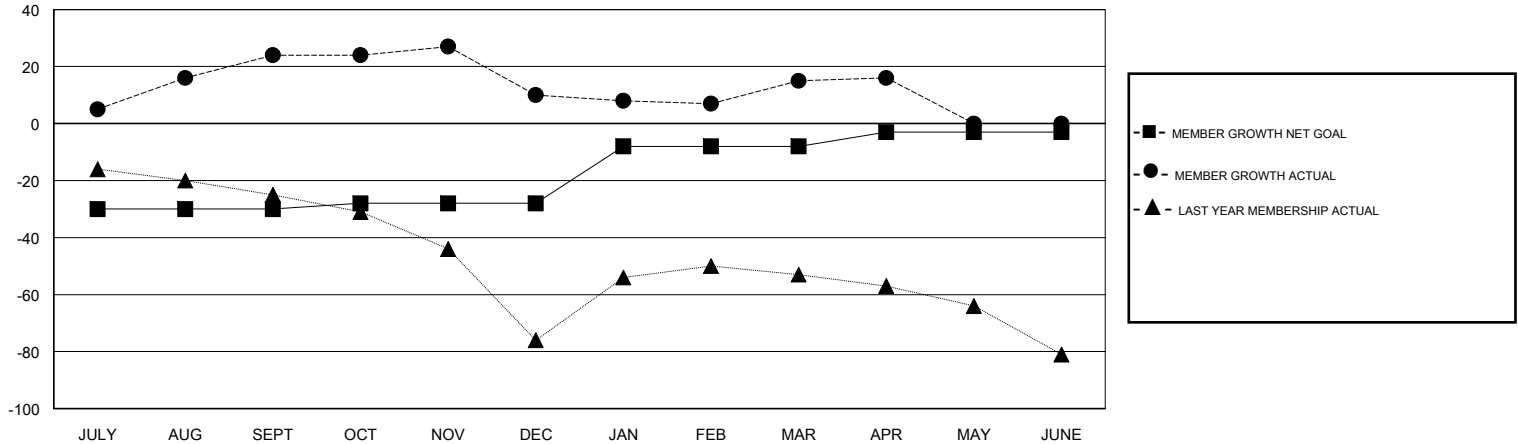
Clubs			
RESULTS FOR 2018-2019			
QUARTER	NEW CLUB GOAL	NEW CLUBS	DROPPED CLUBS
JULY/AUG/SEPT	0	0	0
OCT/NOV/DEC	0	0	0
JAN/FEB/MAR	1	0	0
APR/MAY/JUNE	0	0	0

Members			
RESULTS FOR 2018-2019			
QUARTER	MEMBER GROWTH NET GOAL	MEMBER GROWTH ACTUAL	DROPPED MEMBERS ACTUAL (including transfers)
JULY/AUG/SEPT	-30	75	42
OCT/NOV/DEC	2	42	51
JAN/FEB/MAR	20	35	24
APR/MAY/JUNE	5	12	11

GOALS AND ACTUAL NEW CLUBS CUMULATIVE



GOALS AND ACTUAL MEMBERS CUMULATIVE



DROPPED CLUBS: 0	42 CLUBS OF 62 ADDED 1 OR MORE NEW MEMBERS	<u>GENDER DISTRIBUTION</u> MALE 1,004 (71.16%) FEMALE 407 (28.84%) Women Percentage Fiscal Year Goal: 33%
<u>DROPPED MEMBERS</u> DECEASED 16 CLUB CANCELLED 0 OTHER 112 TOTAL 128	<a href="#">CLICK HERE FOR CUMULATIVE MEMBERSHIP DATA</a>	TOTAL FAMILY UNIT MEMBERS 232 FAMILY MEMBERS PAYING HALF DUES 118